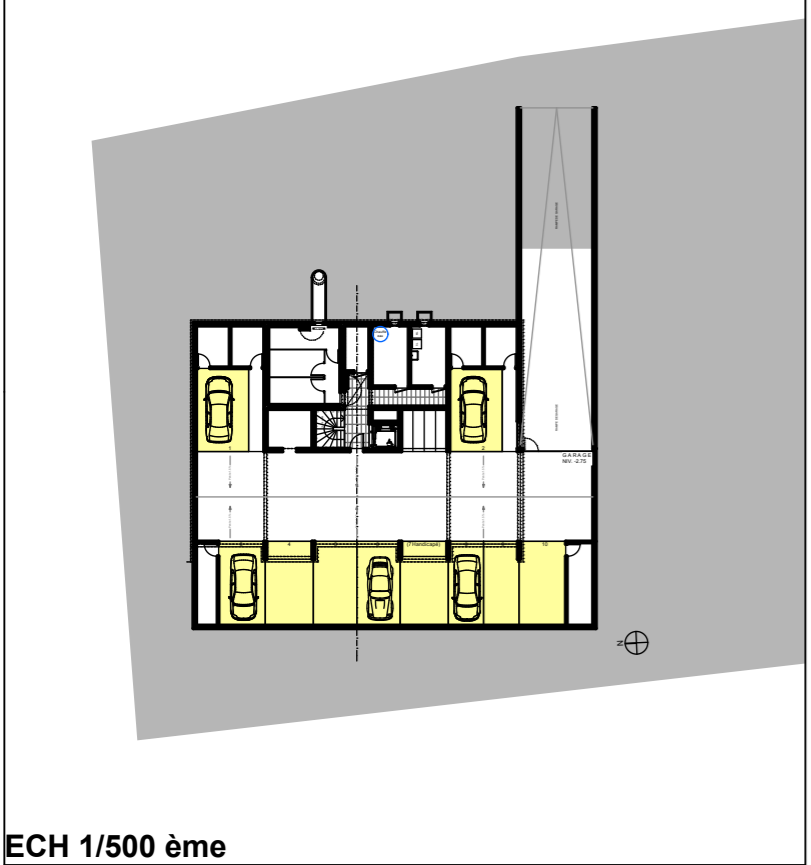


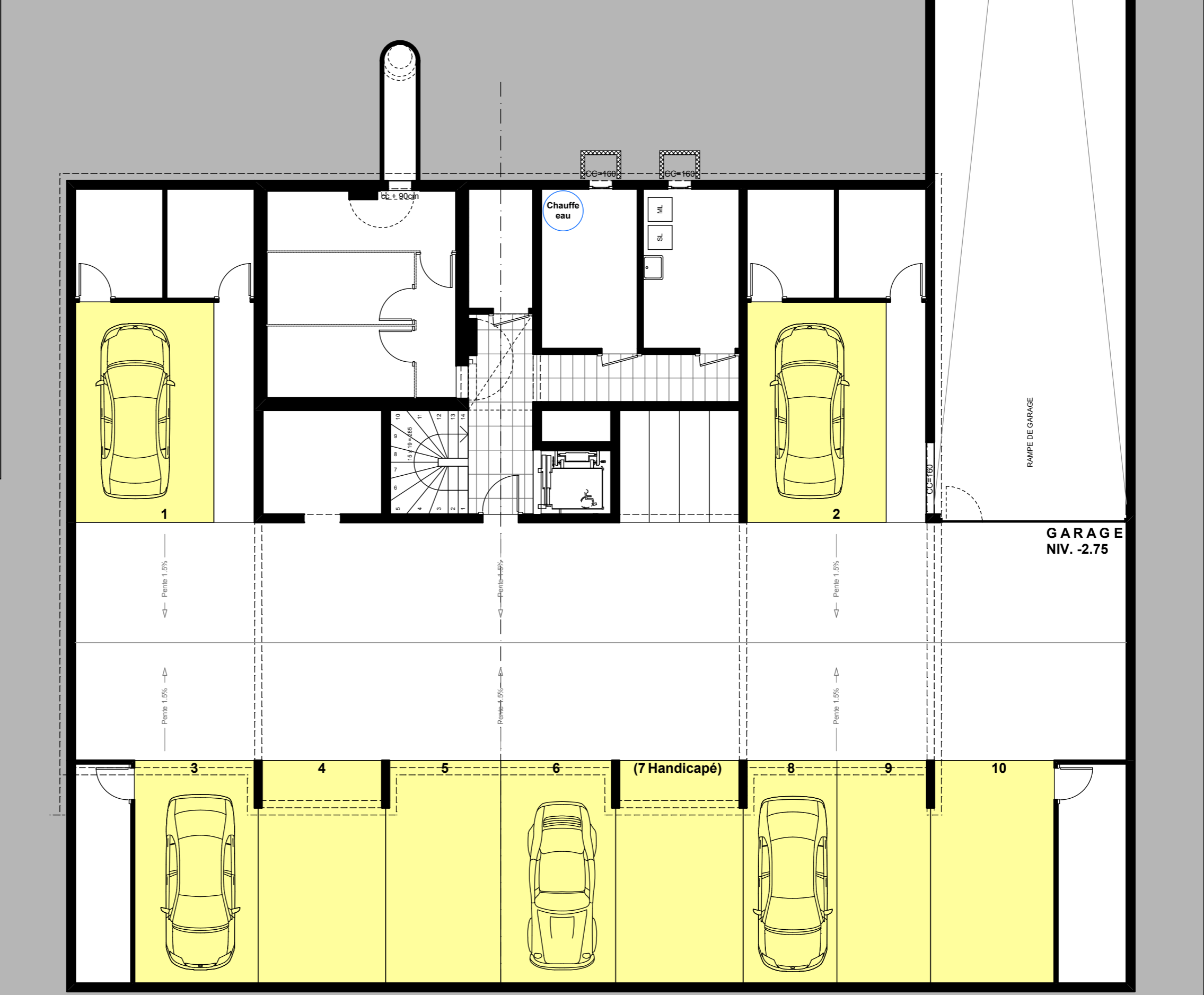
IMMEUBLE DE 9 LOGEMENTS A BOURNENS, *parcelle 461*

SOUS - SOL

Servitudes d'usage de places de parc intérieures



ECH 1/500 ème

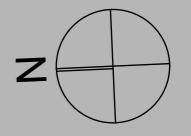
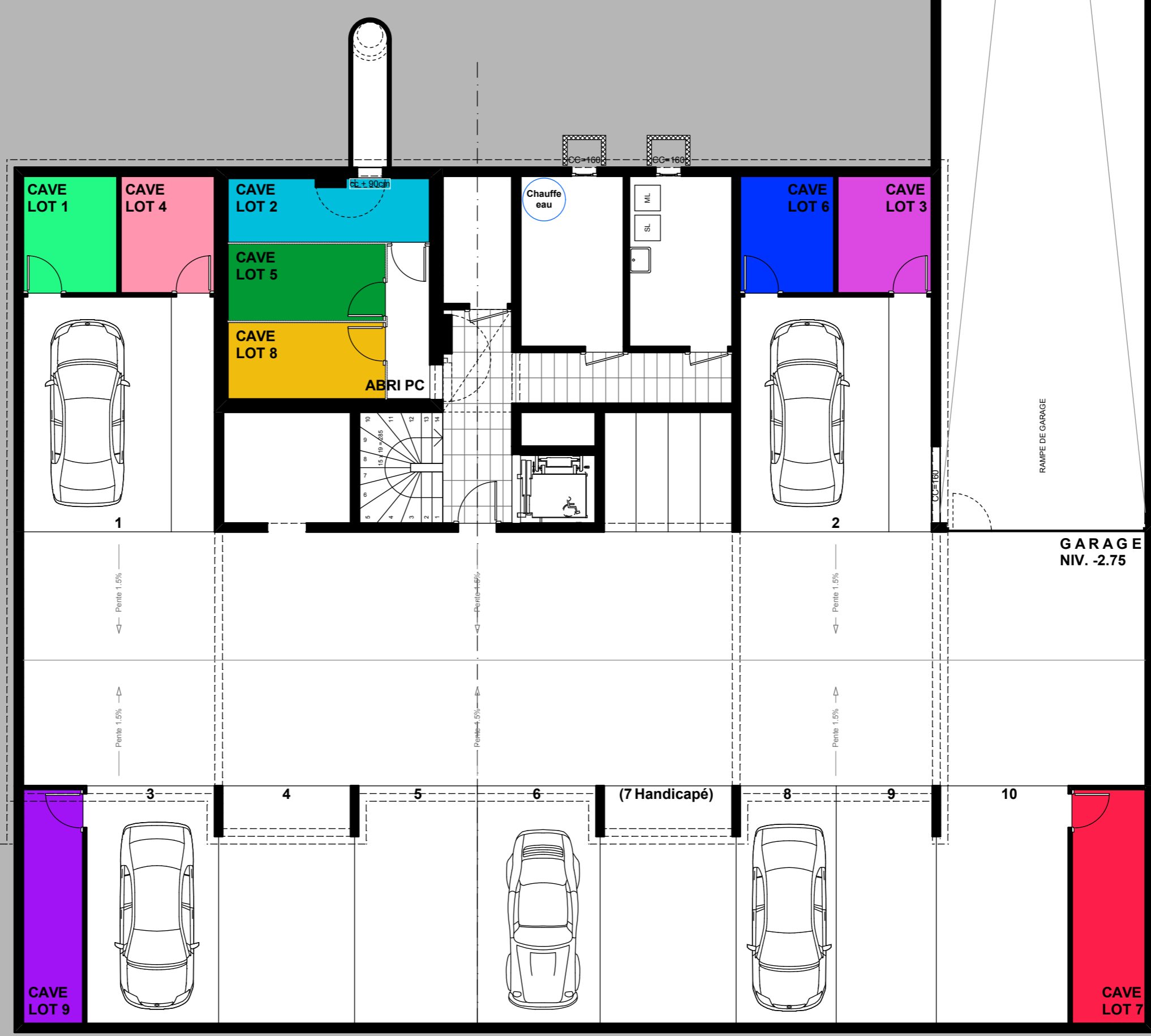


ECH 1/100 ème

IMMEUBLE DE 9 LOGEMENTS A BOURNENS, *parcelle 461*

SOUS - SOL

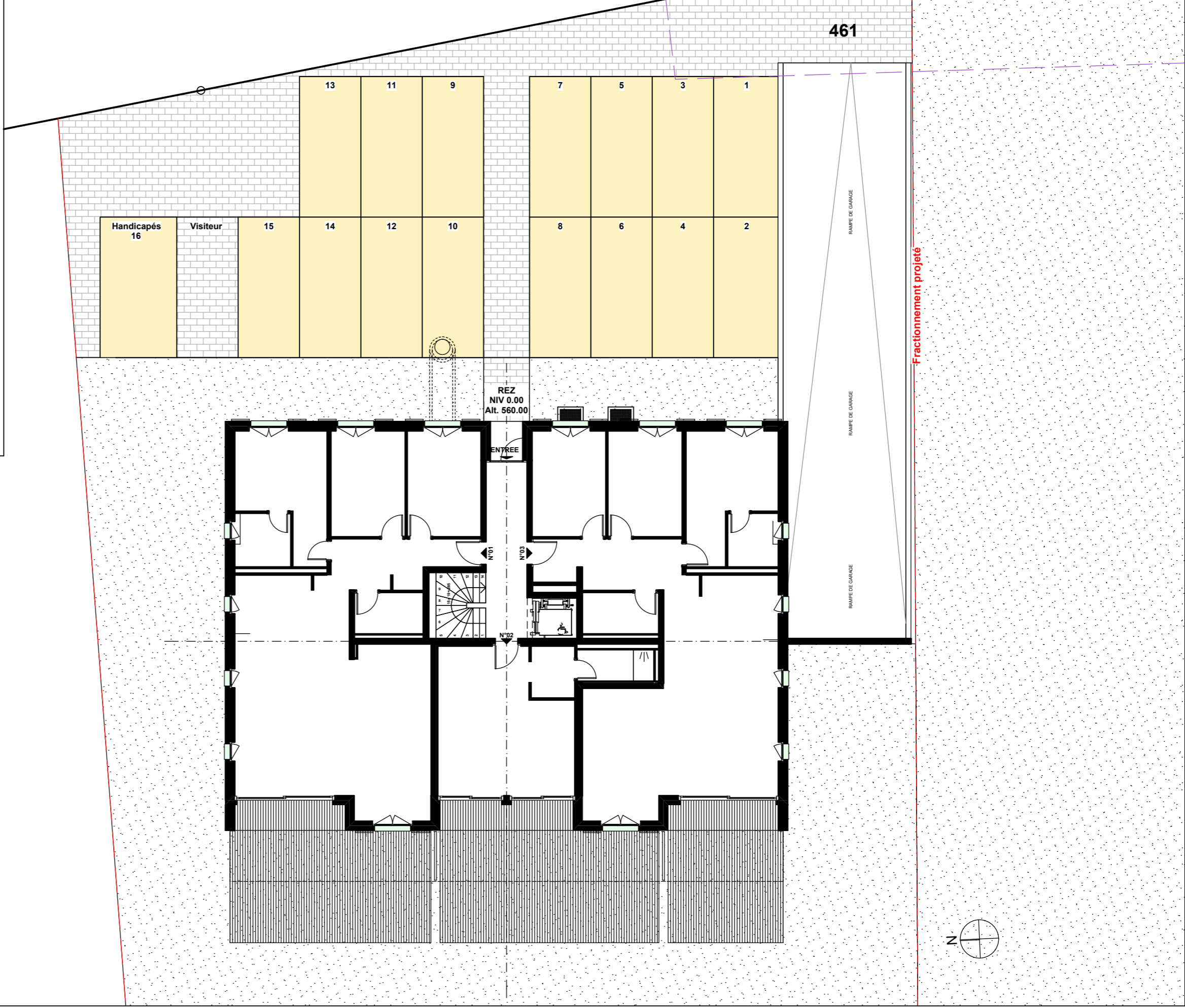
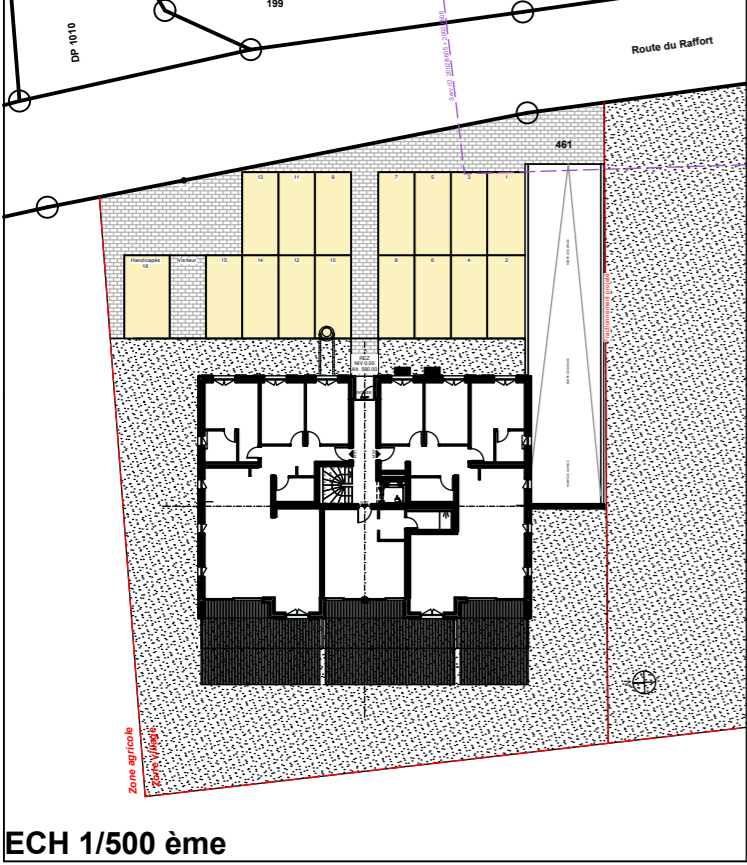
Servitudes d'usage de caves



IMMEUBLE DE 9 LOGEMENTS A BOURNENS, *parcelle 461*

REZ DE CHAUSSEE

Servitudes d'usage de places de parc extérieures






ECH 1/150 ème

IMMEUBLE DE 9 LOGEMENTS A BOURNENS, *parcelle 461*

REZ DE CHAUSSEE

APPARTEMENTS 1 / 2 / 3

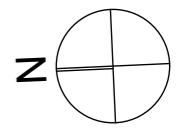
	LOT 1	119.66	M2
	LOT 2	36.39	M2
	LOT 3	115.67	M2



IMMEUBLE DE 9 LOGEMENTS A BOURNENS, *parcelle 461*

ETAGE APARTEMENTS 4 / 5 / 6

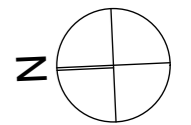
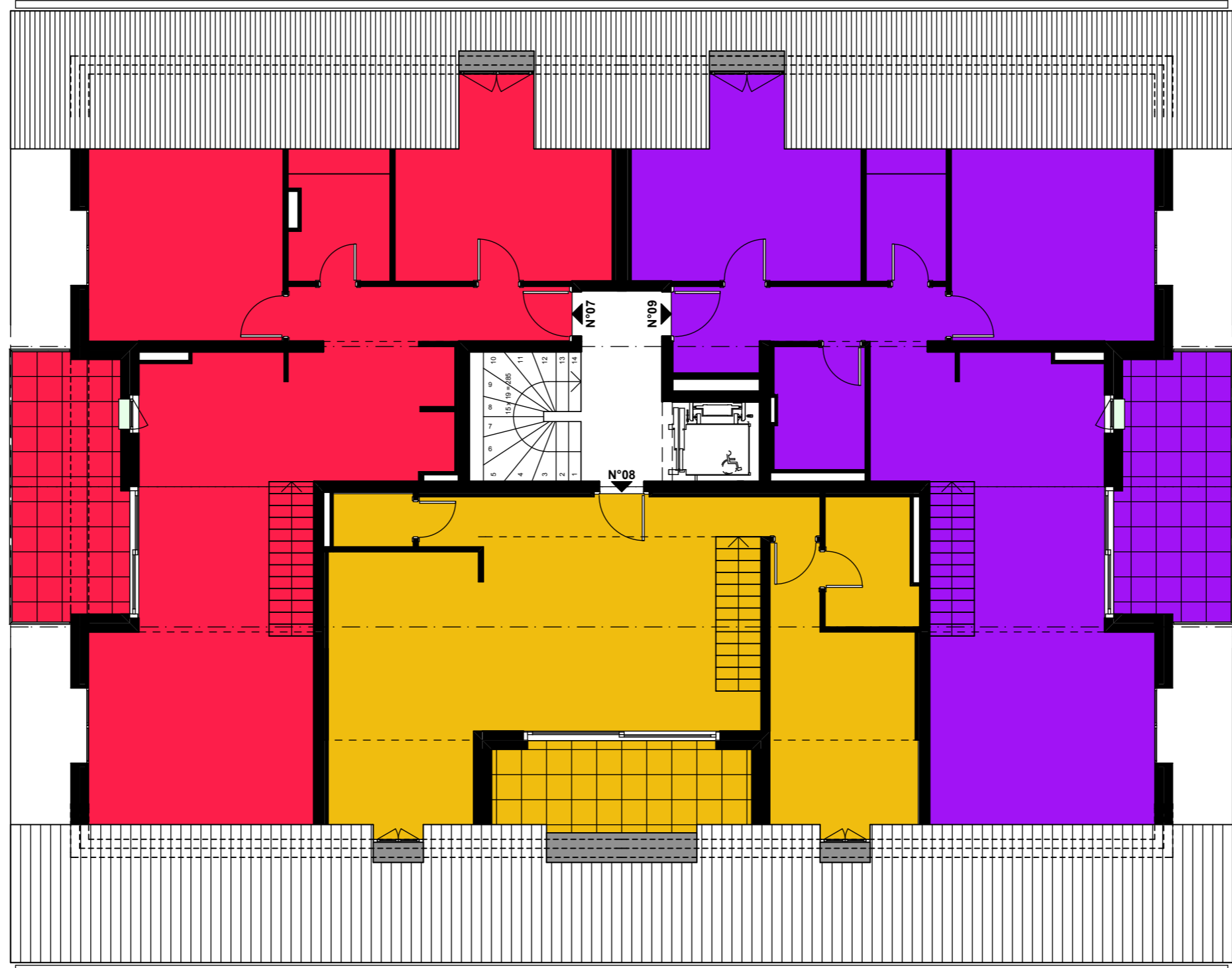
	LOT 4	APPART.	100.89	M2
		BALCON	13.64	M2
	LOT 5	APPART.	75.08	M2
		BALCON	30.80	M2
	LOT 6	APPART.	102.51	M2
		BALCON	13.64	M2



IMMEUBLE DE 9 LOGEMENTS A BOURNENS, *parcelle 461*

COMBLES APPARTEMENTS 7 / 8 / 9


■	LOT 7	APPART.	86.09	M2
		BALCON	12.15	M2
■	LOT 8	APPART.	66.81	M2
		BALCON	9.94	M2
■	LOT 9	APPART.	87.94	M2
		BALCON	12.15	M2



IMMEUBLE DE 9 LOGEMENTS A BOURNENS, *parcelle 461*

SUR COMBLES

APPARTEMENTS 7 / 8 / 9

	LOT 7	30.01	M2
	LOT 8	39.97	M2
	LOT 9	30.01	M2

