

## 196m2 office space available for rent

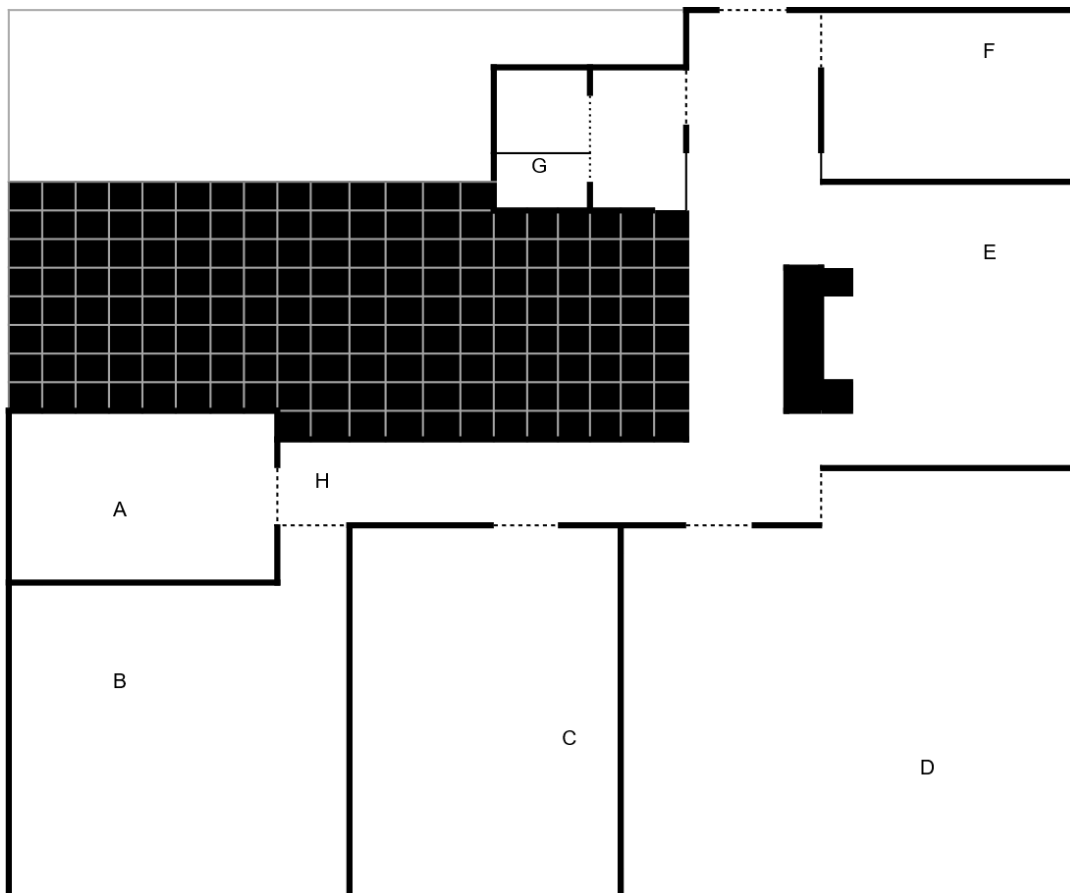
Considering the reorientation of its activities, Intuitive Therapeutics SA is looking for companies or individuals searching for quiet, modern, well-located, and well-connected workplace.

**Possibility for partial rent:** Intuitive Therapeutics is ready to rent the entire office or only a part of it.

### Office

196m2 including 5 rooms, one cafeteria and restrooms are available. 5 external parking places are also available. It has been renewed just before Intuitive Therapeutics arrival in May 2017.

### Map



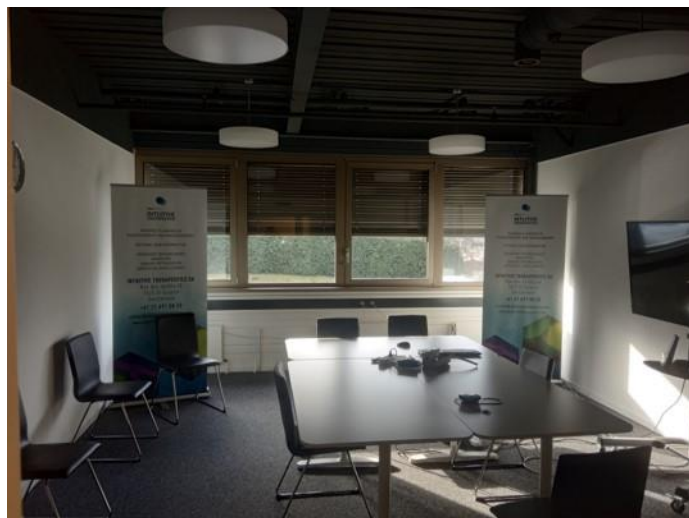
A: Office room 1



B: Office room 2



C: Office room 3



D: Office room 4



E: Cafeteria



F: Office room 5



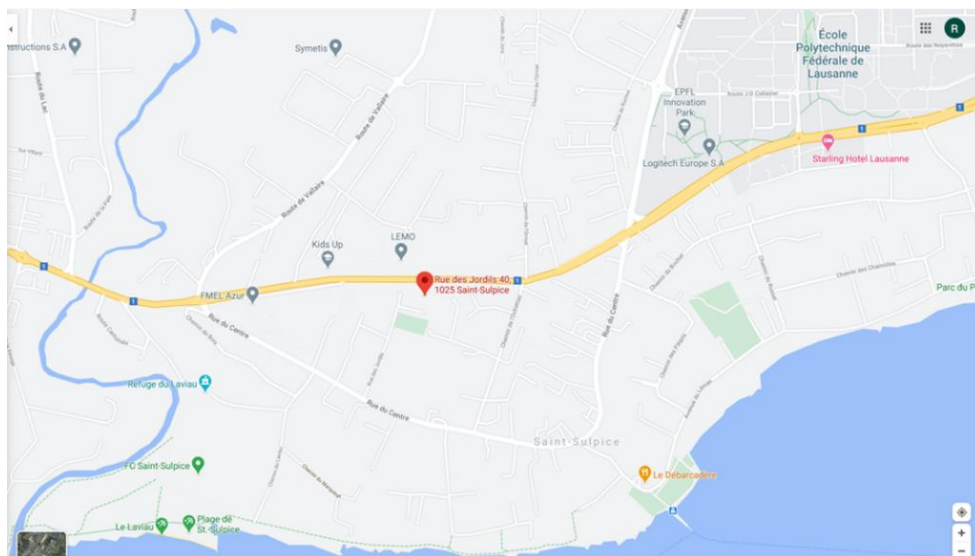
G: Restrooms

H: Corridor



## Location

Rue des Jordils 40,  
1025 St. Sulpice  
Switzerland



**Availability:** immediately

**At less than 5 minutes' walk**

- Public transportation: bus 701 (Lausanne Bourdonette to Morges Gare) and bus 31 (St. Sulpice Venoge Sud to Renens VD Gare Sud) every 5 minutes approximatively.
- EPFL: Ecole Polytechnic Federal Lausanne
- Food:
  - Various restaurant as Mauro Traiteur, Haiku sushi & wok food and Toriko
  - Bakery and restaurants in St. Sulpice centre
- Sport: sport shops and fitness centers
- Shops: Drug store, newspaper store and bank
- Other: Access to the Lemman lake

**Pricing (in CHF)**

Description	Yearly	Monthly	Per year per m2
Net rent	45'120	3'760	230
Down payment for heating and water	2'880	240	14.7
Down payment for incidental costs	9'360	780	47.75
Net rent 5 parking places	6'000	500	
Total	63'360	5'280	

Well maintained furniture is also available. Furniture price can be discussed.

**Contact**

For any question related to this offer, please contact: [info@intuitivetherapeutics.com](mailto:info@intuitivetherapeutics.com)