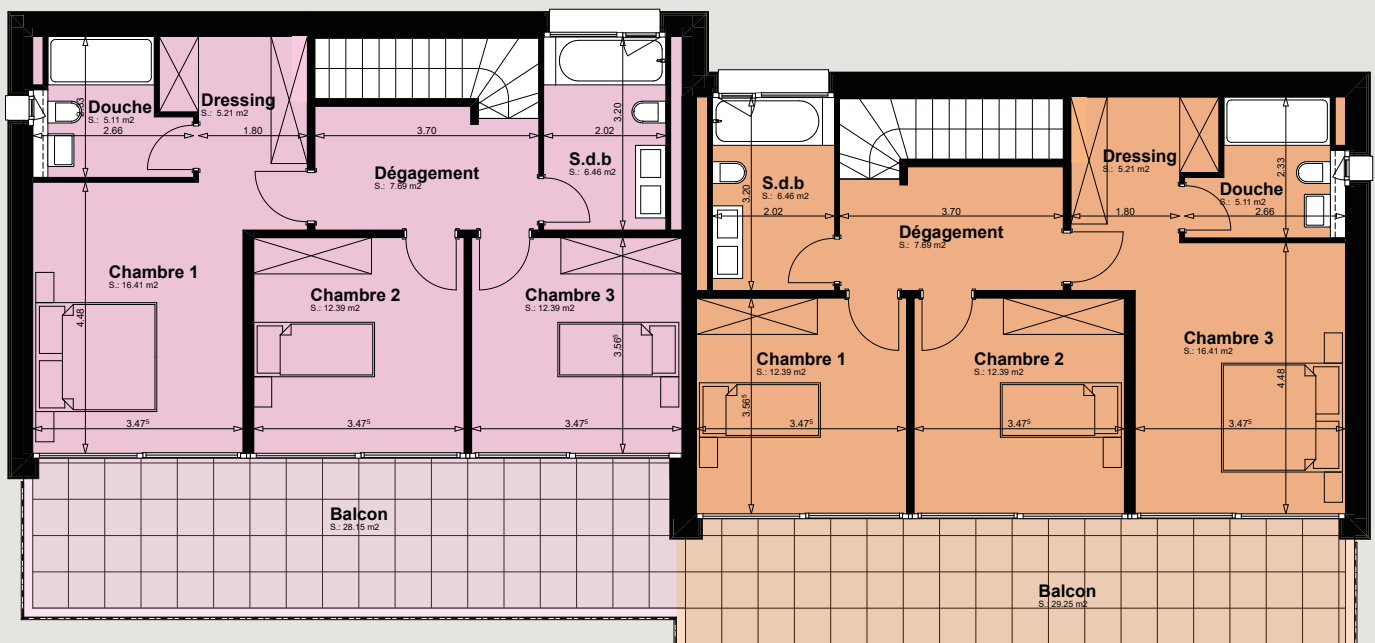


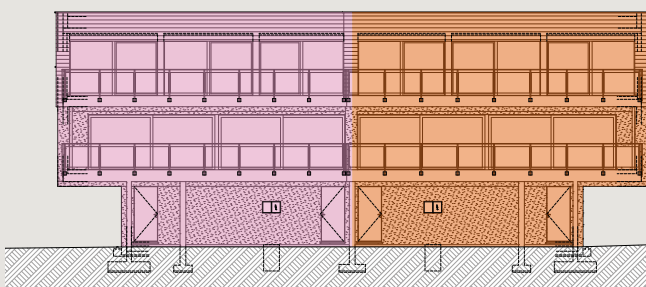


# Villas D3-D4

Etage



Villas D3-D4 / Façade ouest



**Lot D3 / 4.5 pièces**

Surface habitable 124.3 m<sup>2</sup>  
 Surface balcon 69.3 m<sup>2</sup>  
 Surface terrain 500.6 m<sup>2</sup>

**Surface de vente 157.2 m<sup>2</sup>**

**Lot D4 / 4.5 pièces**

Surface habitable 124.3 m<sup>2</sup>  
 Surface balcon 71.5 m<sup>2</sup>  
 Surface terrain 488.0 m<sup>2</sup>

**Surface de vente 157.9 m<sup>2</sup>**